



Dulwich Wood Avenue, SE19 | £1,300,000

020 8702 9333

crystalpalace@pedderproperty.com

pedder
We live local



In General

- Five bedroom semi-detached house
- Prestigious residential location
- Crystal Palace / Dulwich borders
- No onward chain
- Brand new refurbishment
- Large kitchen / diner
- 112 ft sunny rear garden
- Off street Parking
- En suite shower room
- Utility room

In Detail

A completely modernised five-bedroom mid-century semi-detached home, perfectly positioned on a highly regarded road on the borders of Crystal Palace and Dulwich.

Spanning three levels and approximately 1,724 sq ft (160 sq m), the property offers bright, spacious, and seamlessly connected living spaces. The accommodation includes five generously proportioned bedrooms, a striking open-plan kitchen and living area designed for contemporary family life, two stylish bathrooms featuring bespoke tiling and premium fittings, and a practical utility room. At the rear, the garden stretches to 112 ft and benefits from a decked seating area and a sunny south-westerly aspect. The lawned space provides a versatile canvas, ideal for entertaining or relaxing. Set back from the road, the property also features a private driveway with parking for two vehicles.

Dulwich Wood Avenue is one of the area's most prestigious and sought-after addresses. The location offers excellent access to Gipsy Hill Station, Dulwich College, and a range of highly regarded schools including Dulwich Prep, Alleyn's, and JAGS. Residents can enjoy the nearby green spaces of Crystal Palace Park and Dulwich Woods, providing abundant opportunities for outdoor recreation. Commuters benefit from fast and direct services into Victoria and London Bridge from Gipsy Hill Station, with additional connectivity via Sydenham Hill and the Overground network at Crystal Palace, making this a superbly connected and desirable place to call home.

Viewing is highly recommended to fully appreciate the standard of accommodation and location.

EPC: D | Council Tax Band: E

1

2

3

4

5

6

7

8

9

10

11

12

13

14

15

16

17

18

19

20

21

22

23

24

25

26

27

28

29

30

31

32

33

34

35

36

37

38

39

40

41

42

43

44

45

46

47

48

49

50

51

52

53

54

55

56

57

58

59

60

61

62

63

64

65

66

67

68

69

70

71

72

73

74

75

76

77

78

79

80

81

82

83

84

85

86

87

88

89

90

91

92

93

94

95

96

97

98

99

100

101

102

103

104

105

106

107

108

109

110

111

112

113

114

115

116

117

118

119

120

121

122

123

124

125

126

127

128

129

130

131

132

133

134

135

136

137

138

139

140

141

142

143

144

145

146

147

148

149

150

151

152

153

154

155

156

157

158

159

160

161

162

163

164

165

166

167

168

169

170

171

172

173

174

175

176

177

178

179

180

181

182

183

184

185

186

187

188

189

190

191

192

193

194

195

196

197

198

199

200

201

202

203

204

205

206

207

208

209

210

211

212

213

214

215

216

217

218

219

220

221

222

223

224

225

226

227

228

229

230

231

232

233

234

235

236

237

238

239

240

241

242

243

244

245

246

247

248

249

250

251

252

253

254

255

256

257

258

259

260

261

262

263

264

265

266

267

268

269

270

271

272

273

274

275

276

277

278

279

280

281

282

283

284

285

286

287

288

289

290

291

292

293

294

295

296

297

298

299

300

301

302

303

Floorplan

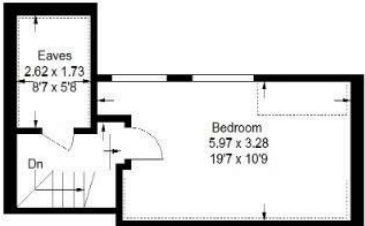
Dulwich Wood Avenue, SE19

Approximate Gross Internal Area
160.2 sq m / 1724 sq ft



Garden
34.32 x 12.98
1127 x 427
(Approx)

Reduced headroom below 1.5 m / 5'0"



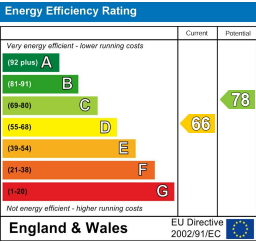
Second Floor



First Floor

Ground Floor

Copyright www.pedderproperty.com © 2025
These plans are for representation purposes only as defined by RICS - Code of Measuring Practice.
Not drawn to Scale. Windows and door openings are approximate. Please check all dimensions, shapes and compass bearings before making any decisions reliant upon them.



Pedder Property Ltd trading as Pedder for themselves and for the vendor/landlord of this property whose agents they are, give notice that (1) these particulars do not constitute any part of an offer or contract, (2) all statements contained within these particulars are made without responsibility on the part of Pedder or the vendor/landlord, (3) whilst made in good faith, none of the statements contained within these particulars are to be relied upon as a statement of representation or fact, (4) any intending purchaser/tenant must satisfy him/herself by inspection or otherwise as to the correctness of each of the statements contained within these particulars, (5) the vendor/landlord does not make or give either Pedder or any person in their employment any authority to make or give representation or warranty whatsoever in relation to this property.